

MATERIAL DATA SHEET

Anode Code EDO-AL-IN-ZN -XXX

Aluminium anodes

Anodes with high current output capacity.

Aluminum alloyed sacrificial anodes with high efficiency, ideal for seawater conditions. Available in numerous shapes and sizes, with various mounting options, suitable for all submerged structures.

Customisation

Anodes can be customized to fit almost any requirement.

Type approval

The aluminum alloyed anodes comply with the DNVGL DNVGL-CP-0107 – sacrificial anode materials, Det Norske Veritas’ Recommended Practices, DNVGL-RP-B401.

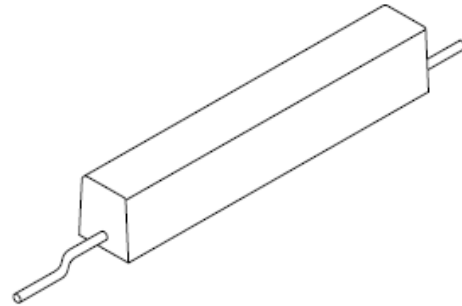
The anodes can be provided in accordance with the NORSOK M-503 and/or DNVGL-RP-B401. Other standards can be met upon request.

The EDOPEC range of aluminum anodes is designed for use in a wide range of applications.

Typical applications are pipelines, storage tank internals, offshore platforms, ships tanks, etc. The range is wide and we give below typical dimensions.

Alternative dimensions and weights are available to suit your specific requirements.

Attachment may be by direct welding or by purpose made clamps designed to suit the particular application.



Project:	EDOPEC ENERJİ PETROL MÜHENDİSLİK SANAYİ VE TİCARET LİMİTED ŞİRKETİ	Proj. Identification:	
Document Title:	AL-IN-ZN ANODE DATASHEETS-EDO-AL-IN-ZN-XXX	Document No.:	EDO-DAT-COE-COR-INT-XXX-020-874-1717-REV.A-AL-IN-ZN ANODE DATASHEETS-EDO-AL-IN-ZN-XXX
Revision:	A	Date:	22.04.2020



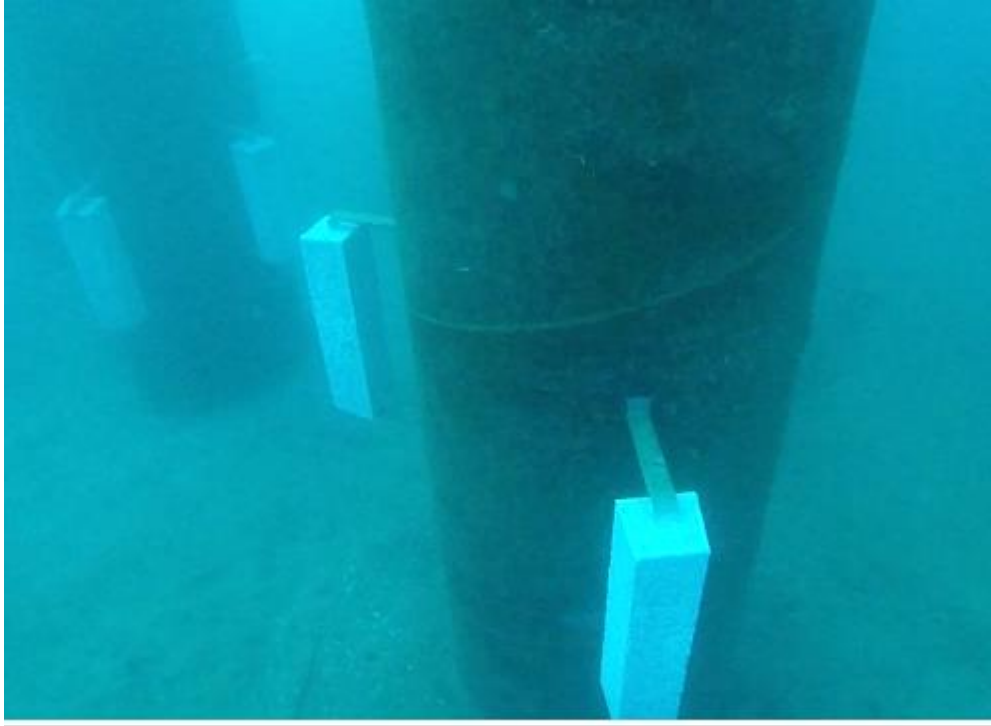
Project:	EDOPEC ENERJİ PETROL MÜHENDİSLİK SANAYİ VE TİCARET LİMİTED ŞİRKETİ	Proj. Identification:	
Document Title:	AL-IN-ZN ANODE DATASHEETS-EDO-AL-IN-ZN- XXX	Document No.:	EDO-DAT-COE-COR-INT-XXX-020-874-1717-REV.A-AL-IN-ZN ANODE DATASHEETS-EDO-AL-IN-ZN-XXX
Revision:	A Date:22.04.2020		



Project:	EDOPEC ENERJİ PETROL MÜHENDİSLİK SANAYİ VE TİCARET LİMİTED ŞİRKETİ	Proj. Identification:	
Document Title:	AL-IN-ZN ANODE DATASHEETS-EDO-AL-IN-ZN- XXX	Document No.:	EDO-DAT-COE-COR-INT-XXX-020-874-1717-REV.A-AL-IN-ZN ANODE DATASHEETS-EDO-AL-IN-ZN-XXX
Revision:	A	Date:	22.04.2020



Project:	EDOPEC ENERJİ PETROL MÜHENDİSLİK SANAYİ VE TİCARET LİMİTED ŞİRKETİ	Proj. Identification:	
Document Title:	AL-IN-ZN ANODE DATASHEETS-EDO-AL-IN-ZN-XXX	Document No.:	EDO-DAT-COE-COR-INT-XXX-020-874-1717-REV.A-AL-IN-ZN ANODE DATASHEETS-EDO-AL-IN-ZN-XXX
Revision:	A	Date:	22.04.2020



The following alloy specifications are widely used

Alloy Composition	Alloy A	Alloy B	Alloy C
Zinc	3.5-5.0	0.5-6.0	0.3-0.8
Aluminium	Balance	Balance	Balance
Magnesium	-	0.02 max	-
Copper	0.01 max	0.005 max	0.005 max
Silicon	0.05-0.2	0.1 max	0.2 max
Iron	0.15 max	0.13 max	0.12 max
Titanium	0.01-0.05	0.02 max	0.05 max
Mercury	-	-	0.03-0.06
Bismuth	0.05-0.15	-	-
Indium	0.02-0.05	0.01-0.05	-
Nominal Capacity AH/kg	2700	2550	2830
Solution Potential (mV)	-1100	-1080	-1050
Density (kg/m3)	2710	2700	2660

Alloy A Alloy A is suitable for use on buried pipelines, coated sub-sea structures, offshore jackets and general piled structures. It can be used at low current densities and elevated temperatures.

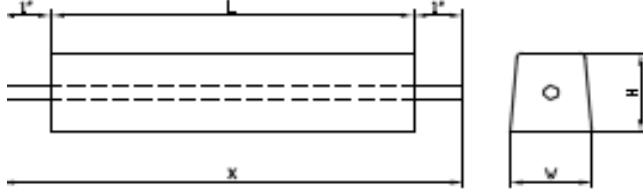
Alloy B Alloy B is a general purpose anode alloy based on Aluminum and Zinc and is used for general sea water applications at normal temperature.

Alloy C Alloy C is also a general purpose alloy using mercury to give an improved efficiency at a lower solution potential. It is not suitable for high temperature applications. This alloy is now not used often because of the mercury content and the effect on the environment.

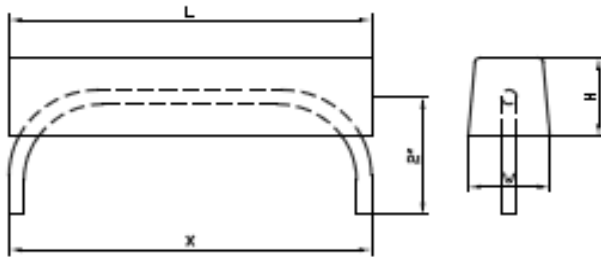
Project:	EDOPEC ENERJİ PETROL MÜHENDİSLİK SANAYİ VE TİCARET LİMİTED ŞİRKETİ	Proj. Identification:	
Document Title:	AL-IN-ZN ANODE DATASHEETS-EDO-AL-IN-ZN-XXX	Document No.:	EDO-DAT-COE-COR-INT-XXX-020-874-1717-REV.A-AL-IN-ZN ANODE DATASHEETS-EDO-AL-IN-ZN-XXX
Revision:	A Date:22.04.2020		

YAPILAR

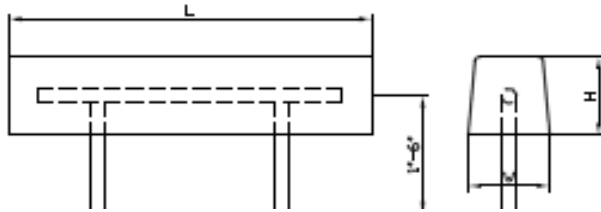
ANOT DETAYLARI



A-GÖVDE TİPİ



B-GÖVDE TİPİ



ANOT BOYUTLARI

ANOT TİPİ	ANOT EĞİTLERİ			Net Alümin. W(kg)	Gövde Tipi Uzunlukları (X)		
	L(m)	W(mm)	H(mm)		A(m)	B(m)	C(m)
H325	2.44	165	165	174.4	3.05	2.13	2.13
H365	1.52	203	203	165.6	2.13	2.13	1.22
H408	1.83	203	191	185.1	2.44	2.44	1.52
H450	2.13	203	191	204.1	2.74	2.74	1.83
H490	2.44	203	178	222.3	3.05	3.05	2.13
H535	2.74	203	191	242.7	3.35	3.35	2.44
H572	3.05	203	191	259.5	3.66	3.66	2.74
H614	3.35	203	191	278.5	3.96	3.96	3.05
H725	2.44	241	241	328.9	3.05	3.05	2.13
H825	1.52	305	305	374	2.13	2.13	1.22
H915	1.83	305	280	415	2.44	2.44	1.52
H1000	2.13	305	280	454	2.74	2.74	1.83
H1080	2.44	305	280	490	3.05	3.05	2.13
H1180	2.74	305	254	535	3.35	3.35	2.44
H1260	3.05	305	254	572	3.66	3.66	2.74
H1348	3.35	305	254	611	3.96	3.96	3.05

Not: Boyutlarınski tolerans: %3 Ağırlıkta: %5

Bütün boyutlar mm.dir.

Revizyon	Tarih	Yapılan İşlem	Yapılan Kişi	Onaylayan Kişi

Project:	EDOPEC ENERJİ PETROL MÜHENDİSLİK SANAYİ VE TİCARET LİMİTED ŞİRKETİ	Proj. Identification:	
Document Title:	AL-IN-ZN ANODE DATASHEETS-EDO-AL-IN-ZN-XXX	Document No.:	EDO-DAT-COE-COR-INT-XXX-020-874-1717-REV.A-AL-IN-ZN ANODE DATASHEETS-EDO-AL-IN-ZN-XXX
Revision:	A	Date:	22.04.2020