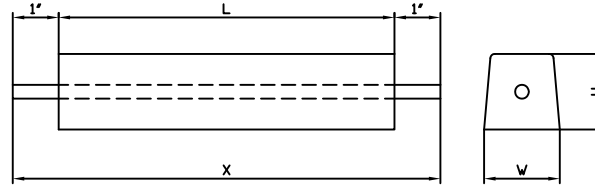
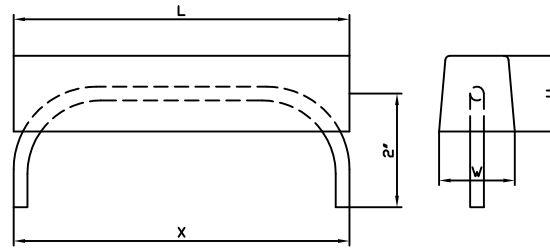


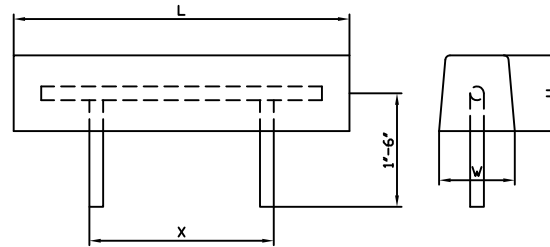
## ANODE DETAIL



**A-GÖVDE TİPİ**



**B-GÖVDE TİPİ**



**C-GÖVDE TİPİ**

## ANODE DIMENSION

ANODE TYPE	DIMENSION			Net Alüm. W.kg.	Gövde Tipi Uzunlukları (X)		
	L(m)	W(mm)	H(mm)		A(m)	B(m)	C(m)
EDO-AL-IN-ZN-H325	2.44	165	165	174.4	3.05	2.13	2.13
EDO-AL-IN-ZN-H365	1.52	203	203	165.6	2.13	2.13	1.22
EDO-AL-IN-ZN-H408	1.83	203	191	185.1	2.44	2.44	1.52
EDO-AL-IN-ZN-H450	2.13	203	191	204.1	2.74	2.74	1.83
EDO-AL-IN-ZN-H490	2.44	203	178	222.3	3.05	3.05	2.13
EDO-AL-IN-ZN-H535	2.74	203	191	242.7	3.35	3.35	2.44
EDO-AL-IN-ZN-H572	3.05	203	191	259.5	3.66	3.66	2.74
EDO-AL-IN-ZN-H614	3.35	203	191	278.5	3.96	3.96	3.05
EDO-AL-IN-ZN-H725	2.44	241	241	328.9	3.05	3.05	2.13
EDO-AL-IN-ZN-H825	1.52	305	305	374	2.13	2.13	1.22
EDO-AL-IN-ZN-H915	1.83	305	280	415	2.44	2.44	1.52
EDO-AL-IN-ZN-H1000	2.13	305	280	454	2.74	2.74	1.83
EDO-AL-IN-ZN-H1080	2.44	305	280	490	3.05	3.05	2.13
EDO-AL-IN-ZN-H1180	2.74	305	254	535	3.35	3.35	2.44
EDO-AL-IN-ZN-H1260	3.05	305	254	572	3.66	3.66	2.74
EDO-AL-IN-ZN-H1348	3.35	305	254	611	3.96	3.96	3.05

Not: Boyutlardaki tolerans. %3 Ağırlıkta. %5

Bütün boyutlar mm.dir.

### Aluminium alloy specification

Components	Impurities	Percentage (%)
Silicon		0.05 - 0.20
Zinc		3.50 - 5.00
Titanium		0.01 - 0.05
Bismuth		0.05 - 0.15
Indium		0.02 - 0.05
Aluminium	Remainder	
	Copper	0.01 max
	Iron	0.15 max
	Others each	0.02 max
	Others total	0.05 max

Electrochemical capacity: 2700 AHr / Kg nominal

Solution potential: -1100 mV vs. Ag / AgCl reference cell nominal (in seawater)

Other specifications are available on request.

Note: All dimensions and weights are nominal. Dimensions in mm  
All data is subject to change without prior notice  
Anode is fitted with galvanised insert  
Anode can also be provided backside coated

Rev.	Date	Description	Prepared	Checked	Approved	Signature
A	22.04.2020	ISSUED FOR REVIEW	T.K.	E.D.	E.D.	E.T.

		EDOPEC ENERJİ PETROL MÜHENDİSLİK SANAYİ VE TİCARET LİMİTED ŞİRKETİ	
Document Title HUGE STRUCTURAL AL-IN-ZN ANODE DETAIL EDO-AL-IN-ZN-XXX		Project Document No.	
No: 0001 Adres: 196. 12. 30. 50. Çarşılar Sok. 10010 KADIKÖY/İSTANBUL Yürürlük Tarihi: 2019 Fone: 0212 3702098 eposta: info@edopec.com.tr	EDO DRG CODE CDR INT XXXX 20 877 1720	Rev. Scale A -	Proj. EDO Sec. Sec. No. No. Page: .....