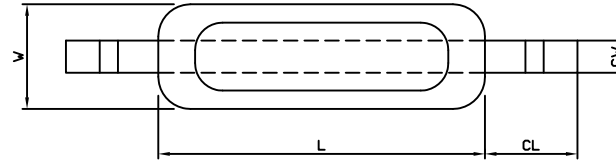
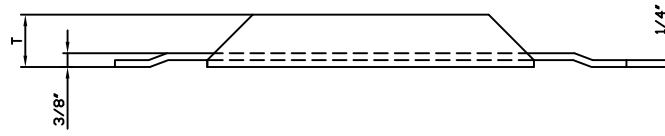
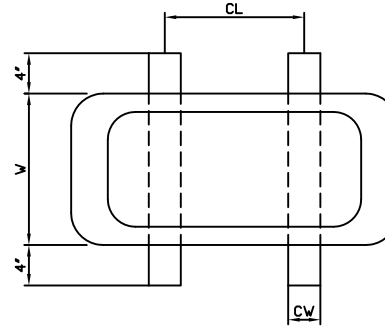
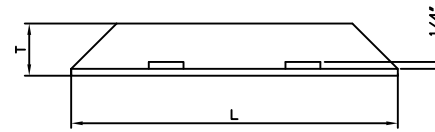


ANODE DETAIL



A-TİPİ



B-TİPİ

HER İKİ TİPDE KAYNAK VEYA ÇİVATALI
OLARAK KAYIŞ ÜZERİNDE MEVCUTTUR.

Aluminium alloy specification

Components	Impurities	Percentage (%)
Silicon		0.05 - 0.20
Zinc		3.50 - 5.00
Titanium		0.01 - 0.05
Bismuth		0.05 - 0.15
Indium		0.02 - 0.05
Aluminium		Remainder
	Copper	0.01 max
	Iron	0.15 max
	Others each	0.02 max
	Others total	0.05 max

Electrochemical capacity: 2700 AHr / Kg nominal
Solution potential: -1100 mV vs. Ag / AgCl reference cell nominal (in seawater)

Other specifications are available on request.

Note: All dimensions and weights are nominal. Dimensions in mm
All data is subject to change without prior notice
Anode is fitted with galvanised insert
Anode can also be provided backside coated

ANODE DIMENSION

ANODE TYPE	TYPE	ANODE DIMENSION				Nominal Anot Ağırlığı,kg.	
EDO-AL-IN-ZN-AA-2-10H	B	356	165	32	152	32	4.5
EDO-AL-IN-ZN-AA-1-12H	A	356	114	57	64	38	5.4
EDO-AL-IN-ZN-A-2-15H	B	546	127	38	292	32	7.0
EDO-AL-IN-ZN-AA-1-20H	A	610	114	57	64	38	9.1
EDO-AL-IN-ZN-A-1-23H	A	610	127	51	64	32	10.4
EDO-AL-IN-ZN-A-1-29H	A	610	127	64	64	38	13.2
EDO-AL-IN-ZN-AA-2-32H	B	508	254	51	254	38	14.5

Not: Boyutlardaki tolerans, %3
Ağırlıkta, %5
Bütün boyutlar mm.dir.

Rev. No.	Date	Description	Prepared	Checked	Approved	Author
A	22.04.2020	ISSUED FOR REVIEW	T.K.	E.D.	E.D.	E.T.

		EDOPEC ENERJİ PETROL MÜHENDİSLİK SANAYİ VE TİCARET LİMİTED ŞİRKETİ	
Document Title SEA SHIP TYPE AL-IN-ZN ANODE DETAIL EDO-AL-IN-ZN-XXX		Project Document No. 20 878 1723	
Rev. No.	Scale	A	

Rev. No.	Date	Description	Prepared	Checked	Approved	Author
EDO	DRG	CODE	CDR	INT	XXXX	20 878 1723
Org. Code	Doc. Type	Clas. Code	Unk. Code	PS. Code	Sec. No.	Page No.