

Aluminium alloy specification

Components	Impurities	Percentage (%)
Silicon		0.05 - 0.20
Zinc		3.50 - 5.00
Titanium		0.01 - 0.05
Bismuth		0.05 - 0.15
Indium		0.02 - 0.05
Aluminium	Remainder	
	Copper	0.01 max
	Iron	0.15 max
	Others each	0.02 max
	Others total	0.05 max

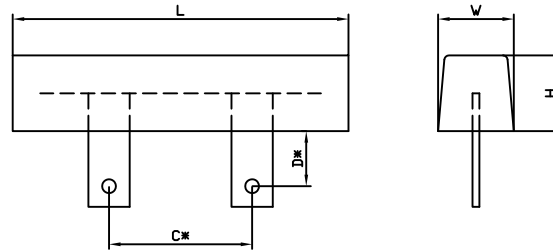
Electrochemical capacity: 2700 Ahr / Kg nominal
Solution potential: -1100 mV vs. Ag / AgCl reference cell nominal (in seawater)

Other specifications are available on request.

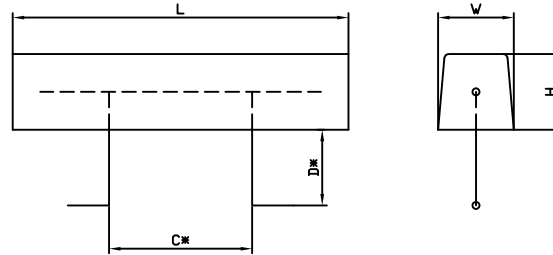
Note: All dimensions and weights are nominal. Dimensions in mm
 All data is subject to change without prior notice
 Anode is fitted with galvanised insert
 Anode can also be provided backside coated

ANODE DETAIL

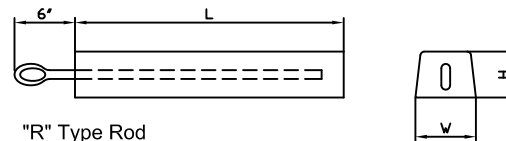
"B" Tipi Perforated Bolt



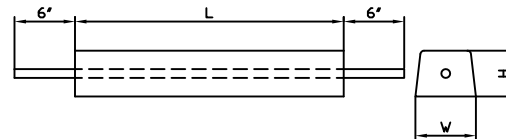
"W" Ttype Weldet



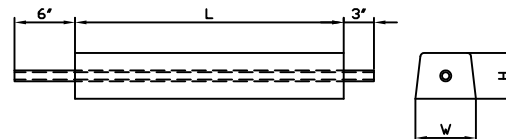
"E" Type Perforated Bolt Body



"R" Type Rod



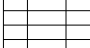
"R" Type Rod



ANODE DIMENSION

ANODE TYPE	DIMENSION			Net Weight kg	Body Type
	L(m)	W(mm)	H(mm)		
EDO-AL-IN-ZN-H43	1219	51	51	9.5	B,R,W
EDO-AL-IN-ZN-H44	1524	51	51	11.8	B,R,W
EDO-AL-IN-ZN-H63	1219	64	64	13.6	B,R,W
EDO-AL-IN-ZN-H30	864	76	76	13.6	E,P,R
EDO-AL-IN-ZN-H64	1524	64	64	17.7	B,R,W
EDO-AL-IN-ZN-H93	1219	76	76	21.8	E,P,R
EDO-AL-IN-ZN-H60-0	305	178	178	27.2	E,P,R
EDO-AL-IN-ZN-H60-1	610	127	127	27.2	E,P,R
EDO-AL-IN-ZN-H60-2	965	102	102	27.2	E,P,R
EDO-AL-IN-ZN-H90-0	457	178	178	40.8	E,P,R
EDO-AL-IN-ZN-H90-1	914	127	127	40.8	E,P,R
EDO-AL-IN-ZN-H100	1524	102	102	45.4	E,P,R
EDO-AL-IN-ZN-H120-0	305	254	254	54.4	E,P,R
EDO-AL-IN-ZN-H120-1	610	178	178	54.4	E,P,R
EDO-AL-IN-ZN-H120-2	1219	127	127	54.4	E,P,R
EDO-AL-IN-ZN-H175	914	178	178	79.4	E,P,R
EDO-AL-IN-ZN-H240	610	254	254	108.9	E,P,R

Note: Tolerance in dimensions. 3% In weight.% 5 ; All dimensions are in mm.

Rev. No.	22/04/2020	ISSUED FOR REVIEW	T.K.	E.D.	E.D.	E.T.
Date		Description	Prepared	Checked	Approved	Issued
			Signature			
 EDOPEC ENERJİ PETROL MÜHENDİSLİK SANAYİ VE TİCARET LİMİTED ŞİRKETİ Document Title OFFSHORE PILES AL-IN-ZN ANODES DETAIL FOR EDO-AL-IN-ZN-xxx Project Document No.						
Rev. No.	Scale	EDO	DRG	CODE	INT	XXXX
20	880	1723				
Proj. No.	Doc. No.	Çiz. No.	İşl. No.	Pf. No.	Rev. No.	Rev. Tarihi