

**Corrosion Coupon Description**

Cathodic protection coupons are a simple, size-specific piece of metal with one or more wires attached and are used for evaluating corrosion control or cathodic protection systems protecting a structure, typically a steel pipeline. These measurements includes:

- Native or unprotected structure-to-soil potentials
- Structure-to-soil potentials with the CP system energized
- Structure-to-soil potentials with the CP system interrupted
- To emulate an "Off" structure-to-soil potential without interrupting CP current, typically referred to as a "Coupon Interrupt" reading.
- For magnitude measurements of AC current density on a structure with known induced AC issues.
- Use as an isolated coupon to evaluate native or unprotected potentials.

**MATERIAL LIST**

No.	Miktar	Birim	Malzeme	Not
03	10	meter	Copper	
02	1	Each	Copper	
01	1	Each	1018 alloy steel or equivalent	

Rev. No.	Date	Description	Prepared	Checked	Approved	Checked	Approved
A	29.05.2020	ISSUED FOR REVIEW	H.A.	A.G.	E.D.	O.D.	M.F.
			Originator			ATAKAS	

**NOTES :**

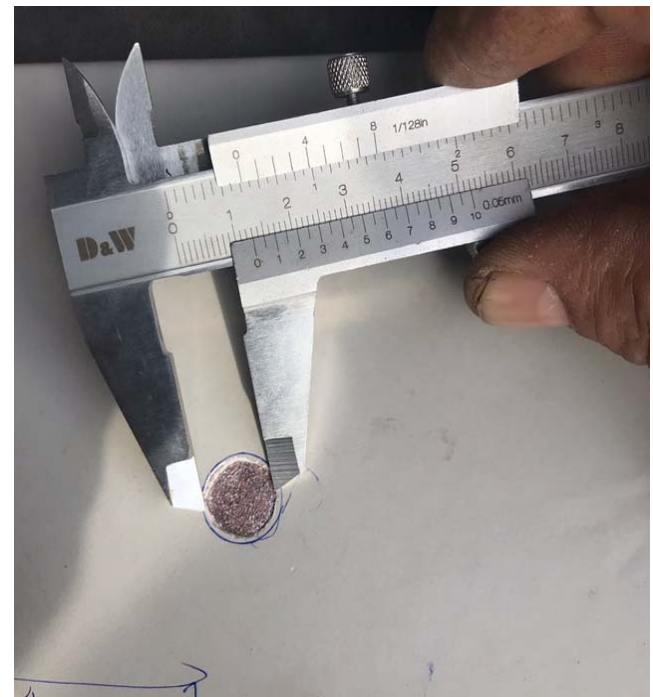
- ALL DIMENTION ARE MM .
- MATERIAL IS 1018 alloy steel or equivalent  
COATING IS 400 MICRON EPOKSI

**EDO-COR-COUPON -20X15**

Coupons are provided in a variety of size ranges depending on the application. Currently, the two most popular sizes are 1 cm<sup>2</sup> and 10 cm<sup>2</sup>. In addition to the coupon size, there are different physical configurations as well.

In addition to our 10 cm<sup>2</sup> range of coupons, Edopec provides a 1 cm<sup>2</sup> coupon made from 1018 alloy steel or equivalent. We call this model the "EDO-COR-COUPON -20X15" due to it's flush 10 cm<sup>2</sup> steel face. This coupon includes a specified length of #12 AWG stranded copper cable with RHH/RHW direct burial insulation, typically green in color.

**Coupon Ordering Information**  
Specify the EDO-COR-COUPON -20X15 steel coupon  
Select the number of cable lead wires, 1 or 2, for the coupon.  
Choose a cable length of 10, 20, 30 or 50 feet. Select a cable insulation color (green is the EDOPEC standard) such as white, blue, orange, etc.



**EDOPEC ENERJİ PETROL MÜHENDİSLİK SANAYİ VE TİCARET LİMİTED ŞİRKETİ**

Document Title **CATHODIC PROTECTION CORROSION COUPON DETAIL EDO-COR-COUPON -20X15**

Project Document No. **EDO DRG COE COR INT XXX 020 885 1728**

Org. Code	Doc. Type	Disc. Code	Unit Code	Prj. Type	Prj. No.	Year	Prj. Seq. No.	DCC. Seq. No.	Page
									1

Rev. A Scale 1/5