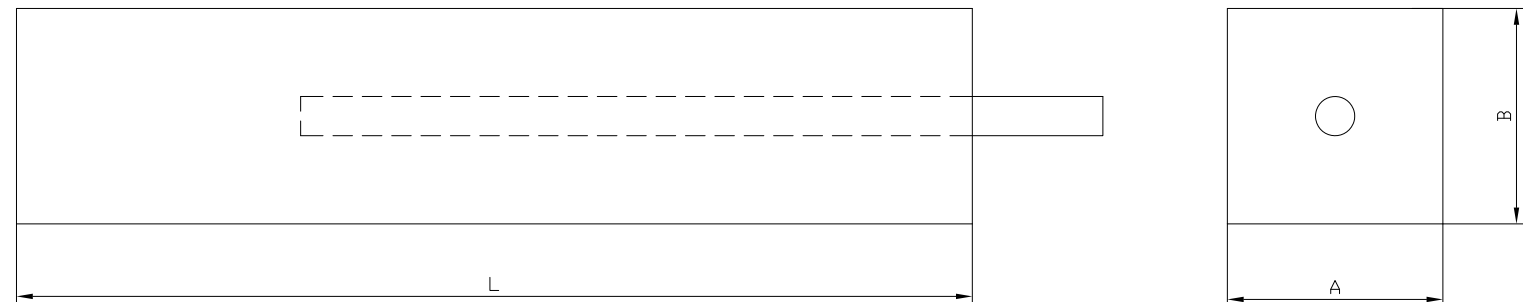


TECHNICAL PERFORMANCE

Capacity	780 Ah/kg
Consumption rate	11.2 kg/Ayear
Specific gravity	7.13 kg/dm ³
Closed circuit potential	-1 030 mV vs Ag/AgCl/seawater

ANODE DETAIL



ANODE DIMENSION

ANODE TYPE	DIMENSION			Net Weight kg
	A	B	L	
EDO-ZN-1020X35-F	35	35	1020	9.0
EDO-ZN-1520X35-F	35	35	1520	14.0
EDO-ZN-1500X42-F	42	42	1500	19.0
EDO-ZN-1220X51-F	51	51	1220	23.0
EDO-ZN-1220X60-F	60	60	1220	32.0
EDO-ZN-915X102-F	102	102	915	68.0

Not:Boyutlardaki tolerans. %3 Ağırlıkta.%5 Bütün boyutlar mm.dir. Note: Tolerance in dimensions. 3% Weight 5% All dimensions are in mm

CHEMICAL COMPOSITION

Material	% by weight
Aluminum (Al) min	0.10, max 0.5
Cadmium (Cd) min	0.025, max 0.07
Iron (Fe)	max 0.005
Copper (Cu)	max 0.005
Lead (Pb)	max 0.006
Others (each)	max 0.10
Zinc (Zn)	remainder

Rev. No.	Date	Description	Prepared	Checked	Approved	T.Loydu	Originator
A	22.04.2020	ISSUED FOR REVIEW	T.K.	E.D.	E.D.	E.T	

EDOPEC ENERJİ PETROL MÜHENDİSLİK SANAYİ VE TİCARET LİMİTED ŞİRKETİ								
Document Title EDO-ZN-XXX TYPE ZN ANODES DETAIL								
Head Office : Palmiye Mah. 1219 Sk. Görsönler Apt. No:15 Kat:2 D:6 PK-33110 Yenibuharç -Mersin-Türkiye P: +90 324 3260596 F: +90 324 3260596 www.edopecc.com.tr info@edopecc.com.tr	Project Document No. EDO DRG COE COR INT XXX 20 875 1718 Rev. Scale A -							
Orig. Code	Doc. Type	Disc. Code	Unit Code	Pj. Type	Pj. No.	Pj. Seq. No.	DCC Seq. No.	Page